



VICTORINOX
SWISS ARMY



WORKBOOK
2019



MAKERS OF THE ORIGINAL SWISS ARMY KNIFE | ESTABLISHED 1884

INDEX

HISTORY & VALUES

4 - HISTORY

8 - VALUES

WATCH COLLECTIONS

10 - I.N.O.X.

24 - MAVERICK

32 - FIELDFORCE

38 - ALLIANCE

52 - AIRBOSS

COMPONENTS & QUALITY

60 - STRAPS

65 - QUALITY

67 - COMPONENTS

68 - MOVEMENTS

CUSTOMER SERVICE

69 - CUSTOMER SERVICE

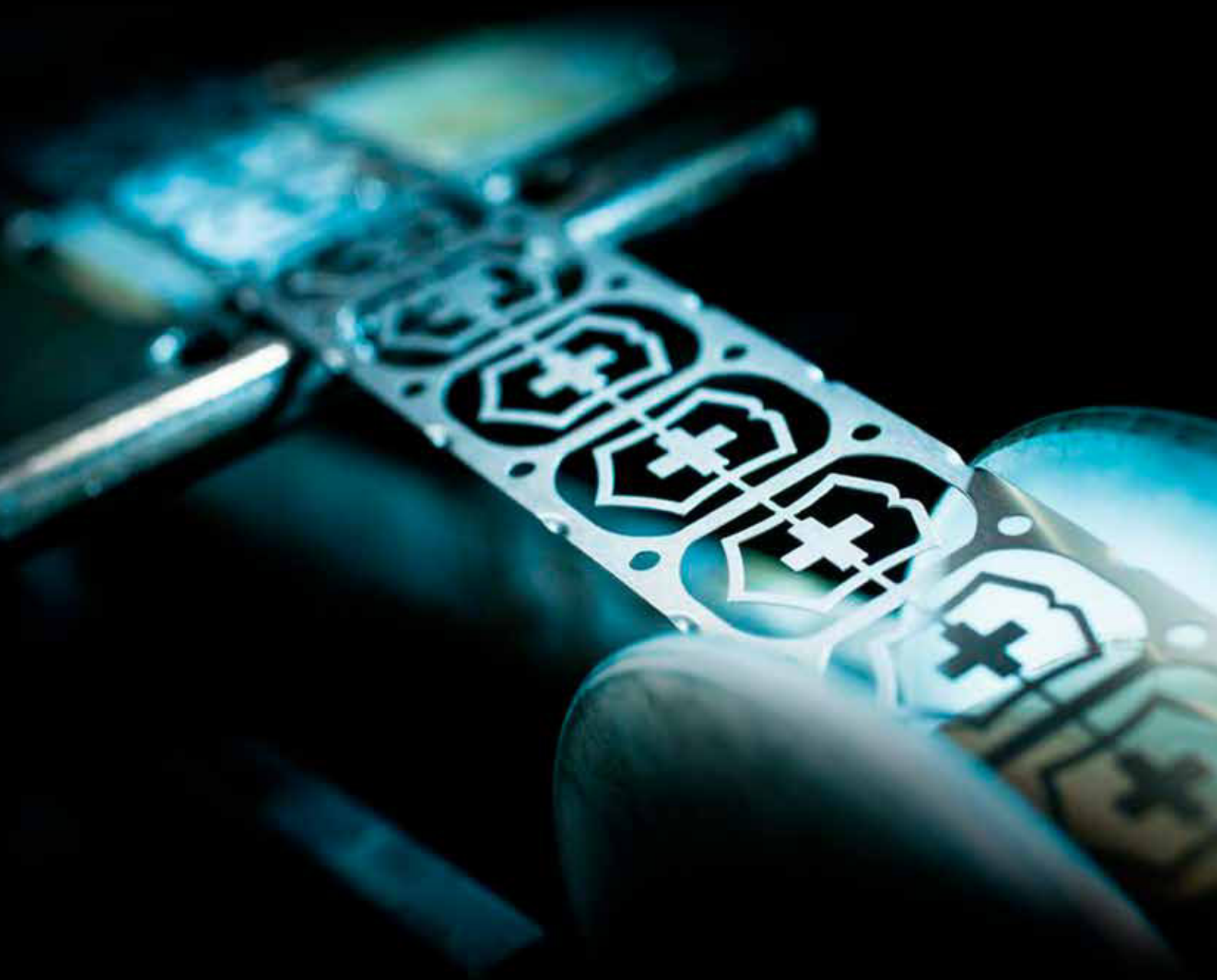
TECHNICAL SPECIFICATIONS

71 - TECHNICAL SPECIFICATIONS TABLE

The product information contained in this catalog was current at the time of printing.

Victorinox reserves the right to change specifications and designs without notice and without liability for such change.

“Victorinox, the famous Victorinox Cross and Shield, and “swiss Army” are trademarks owned by Victorinox AG and its affiliates.



MORE THAN 130 YEARS OF TRADITION AND EXPERIENCE

Victorinox creates products which are designed to be true companions for life. Precise and elegantly engineered, our company is proud to represent the distinguished characteristics of our country through the manufacturing of the Swiss Army Knife. They are one of the key symbols of excellent Swiss quality and ingenuity. Still today, the core values upon which our business and manufacturing is based, are as relevant as they were in 1897 when Karl Elsener created the Original Swiss Army Knife: Functionality, innovation, iconic design and uncompromising quality. Victorinox products have accompanied people through life's adventures since 1884. They are the ambassadors of our timeless Swiss values – as timeless as the models you will discover on the following pages.

Time is perhaps the most precious of all commodities. That's why we create our timepieces with durability, elegance and razor-sharp precision. Our products are the result of the dedicated work of 2100 individuals who are part of the Victorinox family from around the world. It is the culmination of their contributions which make Victorinox products what they are: unique.

We are looking forward to writing the next chapter of our company history together. For your continued support and your dedication to our brand, I would like to express my sincere thanks.



CARL ELSENER
CEO Victorinox Group



HISTORY

THE SPIRIT OF INNOVATION & SUSTAINABILITY

RESPONSIBLY MEETING THE NEEDS OF THE PRESENT – AND ENSURING THAT FUTURE GENERATIONS WILL BE ABLE TO MEET THEIRS – REQUIRES INNOVATIVE THINKING ON AN UNPRECEDENTED SCALE. ROBUSTNESS, DURABILITY AND QUALITY ARE THE KEY REQUISITES.

1884

Karl Elsener opens a cutlery workshop in Ibach, in the Canton of Schwyz, with the support of his mother Victoria.

1891

Initiated by Karl Elsener, the Swiss Cutlery Union is founded. Karl Elsener and his co-workers deliver soldier's knives to the Swiss Army for the first time.

1897

The name "Swiss Officer's and Sport Knife" is legally protected on June 12. This model later becomes known around the world as the "Original Swiss Army Knife".

1909

Following the death of his mother, Karl Elsener introduces the brand name "Victoria" in her honor.

The company's founder legally registers the distinctive emblem with the cross and shield as a trademark. It is now a registered trademark in more than 120 countries.

1921

The invention of stainless steel being of central importance for the cutlery industry, Karl Elsener coins the company's new name, "Victorinox" by combining his mother's name "Victoria" with "Inox".

(Inox is an abbreviation of the French word "inoxydable" which means stainless.)

1931

The Brown Boveri Company sets up the world's first fully electric heat treatment facility for Victorinox.

1945

The "Original Swiss Army Knife" begins its successful progression around the world and is particularly popular in US Army PX stores.

1979

On January 2, the previously solely-owned "Messerfabrik Carl Elsener" is converted to the family-owned company "Victorinox AG".

1984

The company doubles the size of its plant and office space with 810 employees generating revenue of more than CHF 80 million.

1989

Victorinox's American distribution partner enters the timepiece market in the USA under the "Swiss Army Brands, Inc." label and launches the brand's first watches collection produced in Biel, Switzerland.

1992

The company opens its own sales subsidiary in Japan. Further subsidiaries follow in subsequent years.

1999

Victorinox enters the travel gear market, issuing a manufacturing license to the American TRG Group in St. Louis.

Expanding its timepiece business, the company establishes Victorinox Watch SA in Bonfol, in Switzerland's Jura watch-making region.

2000

The Victorinox Foundation is set up. It holds 85% of the shares in Victorinox AG. A further 15% are held by the charitable Carl and Elise Elsener-Gut Foundation.

2001

Victorinox apparel is introduced in the USA.

The first Victorinox Flagship store opens its doors to the public in New York's trendy Soho district.

2002

The publicly traded US distribution partner Swiss Army Brands Inc. is privatized.

The timepiece brand Victorinox Swiss Army is launched internationally.

2003

Victorinox takes over the US-American company Wenger NA, including the fragrance label "Swiss Army Fragrance".

2005

Victorinox takes over the traditional Swiss cutlery and watch manufacturer Wenger SA in Delémont in the Swiss Jura.

2006

Victorinox Swiss Army moves to its new watch production facility in Porrentruy, in the Swiss Jura, to meet increasing demand and to ensure high-quality timepieces.

2007

Victorinox sets up Victorinox Swiss Army Fragrance AG based at its head office. The former Wenger fragrance line is repositioned in the market and is branded with the Victorinox emblem.

2008

The company's first European Flagship store opens on London's New Bond Street.

2009

Geneva City hosts first Victorinox Flagship store in Switzerland.

125 years after its foundation, Victorinox now employs more than 1800 employees worldwide and generates revenues of around CHF 500 million.

2012

Launch of the first Victorinox Global Brand Campaign.

2014

To celebrate the brand's 130th anniversary and the watches division's 25th anniversary, Victorinox Swiss Army launches I.N.O.X. Designed and built to withstand unusual levels of stress, this watch has passed a battery of 130 tests certifying it is "forged to resist".

2015

Victorinox Swiss Army moves to its new watchmaking competence center in Delémont in the Swiss Jura.

2016

Inauguration of the watch case production facility in Delémont.





BRAND VALUES

EACH VICTORINOX SWISS ARMY WATCH EMBODIES THE SPIRIT OF THE LEGENDARY ORIGINAL SWISS ARMY KNIFE, A UNIVERSAL SYMBOL OF FUNCTIONALITY, INNOVATION, QUALITY AND ICONIC DESIGN.

QUALITY

Victorinox Swiss Army produces its watches in its own workshops based on criteria that emphasize technical performance, so as to optimize usefulness and practicality. They meet the highest standards of the Swiss watchmaking industry. Before leaving the facility, each watch reference is certified after undergoing a battery of at least 100 tests. Among the most important tests are water resistance, temperature, corrosion, UV, traction and torsion, vibration and shock resistance, aging and wear. In addition to this long control process, they are also visually inspected between each manufacturing step. For these reasons, Victorinox Swiss Army watches have a three-year warranty. They are genuine precision instruments, modern and timeless in design, and built to last.

FUNCTIONALITY

All Victorinox Swiss Army watches are designed for maximum utility. Functionality is a focus for every aspect

of the timepiece, from the dial, which should be easy to read, to the most sophisticated professional functions. All design details are based on their practical application. Functions are never mere additions or embellishments.

INNOVATION

The objective of Victorinox Swiss Army is to enrich its collections regularly with new design elements and innovative features, while seeking creative solutions for the updates of existing components.

ICONIC DESIGN

Victorinox Swiss Army watches are inspired by the Original Swiss Army Knife, which has become, over many decades, one of the world's most recognizable objects of functional design. Sharing the same source of inspiration, both the watch and the knife symbolize the union between the history of Victorinox and its contemporary interpretations.



AUTHENTICITY

If it does not have our Cross and Shield emblem and Victorinox Swiss Army or Victorinox on the dial, it is not an authentic Victorinox Swiss Army watch. Ours are the only timepieces authorized by the Swiss government to carry the name Swiss Army.



3-YEAR WARRANTY

A minimum of 100 quality control tests allow Victorinox Swiss Army to offer a 3-year warranty!





I.N.O.X.

The I.N.O.X. collection is engineered to endure a truly adventurous life. I.N.O.X. watches can handle extreme conditions such as a fall of 10 meters, being driven over by a 64-ton tank or a dive down to 200 meters. They were also designed to please the eye. Day or night, in the office or on a mountain, nothing beats the durable, versatile look of the I.N.O.X. collection.

I.N.O.X.

COLLECTION'S TECHNICAL SPECIFICATION

Case

Ø 43 mm

Crystal: sapphire

Crystal specification: triple coated and anti-reflective

Water resistant to: 20 ATM/200 M/660 FT

Screw-in caseback

Screw-down crown

Protected crown

Dial

Luminescent hands

Luminescent markers

Date

Applied numerals



COLLECTION'S KEY FOCUS POINTS



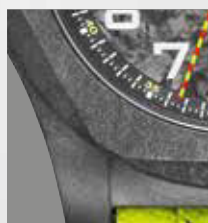
The Super-LumiNova® technology enables effortless readability in the dark



Thick underset sapphire crystal



Oversized protected screw-down crown



Carbon case highly resistant to scratches *



Water-resistant to 200 m



Bumper to protect the watch against scratches

* Depending on models

I.N.O.X. CARBON

Ø 43 mm

Movement

Analog quartz
Ronda 715

Specific features

Withstands up to 130 extreme endurance homologation tests
Unique space-tested carbon case highly resistant to scratches.
Innovative handwoven survival paracord strap dyed in neon yellow with reflective tracers to offers high visibility.
Limited edition of 1200 numbered pieces, delivered in exclusive packaging containing a special edition Rescue Tool, an additional black leather strap, a paracord key ring and a bumper.

Details

Straps & bracelets: See page 60
Movements: See page 68
Technical specifications: See page 71

New



241858.1

I.N.O.X. CARBON

Ø 43 mm

Movement

Analog quartz
Ronda 715

Specific features

Withstands up to 130 extreme endurance homologation tests
Unique space-tested carbon case that's highly resistant to scratches. Color matching innovative handwoven survival paracord strap with green tracers. The Super-LumiNova® technology enables effortless readability in the dark
Delivered in bespoke packaging housing an additional rubber strap and bumper

Details

Straps & bracelets: See page 60
Movements: See page 68
Technical specifications: See page 71

New



241859

New



241860

New



241861



I.N.O.X. TITANIUM

Ø 43 mm

Movement

Analog quartz
Ronda 715

Specific features

Withstands 130 extreme endurance homologation tests
Hypoallergenic and light weighted titanium case for absolute comfort. The genuine rubber strap can be worn in any situation and under any circumstance
Delivered with a removable compass bumper to protect against scratches

Details

Straps & bracelets: See page 60
Movements: See page 68
Technical specifications: See page 71



241758



241759



I.N.O.X.

Ø 43 mm

Movement

Analog quartz
Ronda 715

Specific features

Withstands 130 extreme endurance homologation tests
High grade Swiss Made stainless steel (316L) case. The genuine rubber strap can be worn in any situation and under any circumstance.
Delivered with a removable bumper to protect against scratches

Details

Straps & bracelets: See page 60
Movements: See page 68
Technical specifications: See page 71



241682.1



241688.1



241719.1

I.N.O.X.

Ø 43 mm

Movement

Analog quartz
Ronda 715

Specific features

Withstands 130 extreme endurance homologation tests
High grade Swiss Made stainless steel (316L) case. Innovative handwoven survival paracord strap
Delivered with a removable compass bumper to protect against scratches

Details

Straps & bracelets: See page 60
Movements: See page 68
Technical specifications: See page 71



241726



241727

I.N.O.X. PROFESSIONAL DIVER

COLLECTION'S TECHNICAL SPECIFICATION

Case

Ø 45 mm

Crystal: sapphire

Crystal specification: triple coated and anti-reflective

Water resistant to: 20 ATM/200 M/660 FT

Screw-in caseback

Screw-down crown

Protected crown

Dial

Luminescent hands

Luminescent markers

Date

Monobloc



COLLECTION'S KEY FOCUS POINTS



Unidirectional rotating bezel



Thick underset sapphire crystal



Blue superluminova for diver indicators (minute hand & bezel marker) & green superluminova for time indicators



ISO divers' watches certification, water-resistant up to 200m.
Anti-magnetism



Sandblasted stainless steel case for a modern look



Bumper to protect the watch against scratches with removable magnifying glass

* Depending on models

I.N.O.X. PROFESSIONAL DIVER

Ø 45 mm

Movement

Analog quartz
Ronda 715

Specific features

Withstands up to 130 extreme endurance homologation tests
ISO 6425 certified diver watch with anti-magnetism and water resistance up to 200m. Sandblasted stainless steel case for a modern look. Extensible genuine rubber strap to fit safely over diving suit.

Delivered in a shockproof box housing an additional rubber strap and a translucent protective bumper with removable magnifying glass.

Details

Straps & bracelets: See page 60
Movements: See page 68
Technical specifications: See page 71

New



241844



I.N.O.X. PROFESSIONAL DIVER

Ø 45 mm

Movement

Analog quartz
Ronda 715

Specific features

Withstands up to 130 extreme endurance homologation tests
ISO 6425 certified diver watch with antimagnetism and water resistance up to 200 m, sandblasted stainless steel case for a modern look and innovative handwoven survival paracord strap with reflective tracers to fit safely over a diving suit

Delivered in a shockproof box housing an additional rubber strap and a translucent protective bumper with removable magnifying glass.

Details

Straps & bracelets: See page 60
Movements: See page 68
Technical specifications: See page 71

New



241843

New



241845

I.N.O.X. PROFESSIONAL DIVER

ø 45 mm

Movement

Analog quartz
Ronda 715

Specific features

Withstands 130 extreme endurance homologation tests
ISO 6425 certified diver watch with anti-magnetism and water resistance up to 200m. Stainless steel strap with diver extension to fit safely over a diving suit
Delivered with a translucent protective bumper with removable magnifying glass

Details

Straps & bracelets: See page 60
Movements: See page 68
Technical specifications: See page 71



241781



241782

I.N.O.X. PROFESSIONAL DIVER

ø 45 mm

Movement

Analog quartz
Ronda 715

Specific features

Withstands 130 extreme endurance homologation tests
ISO 6425 certified diver watch with anti-magnetism and water resistance up to 200m. Extensible genuine rubber strap to fit safely over a diving suit
Delivered with a translucent protective bumper with removable magnifying glass

Details

Straps & bracelets: See page 60
Movements: See page 68
Technical specifications: See page 71



241733



241734



241736

I.N.O.X. PROFESSIONAL DIVER TITANIUM

Ø 45 mm

Movement

Analog quartz
Ronda 715

Specific features

Withstands 130 extreme endurance homologation tests.
ISO 6425 certified diver watch with anti-magnetism and water resistance up to 200m. Hypoallergenic and light weighted titanium case for absolute comfort. Innovative handwoven survival paracord strap to fit safely over a diving suit.
Delivered in a shockproof box housing an additional rubber strap and a translucent protective bumper with removable magnifying glass.

Details

Straps & bracelets: See page 60
Movements: See page 68
Technical specifications: See page 71



241812



241813



I.N.O.X. PROFESSIONAL DIVER TITANIUM

Ø 45 mm

Movement

Analog quartz
Ronda 715

Specific features

Withstands 130 extreme endurance homologation tests.
ISO 6425 certified diver watch with anti-magnetism and water resistance up to 200m. Hypoallergenic and light weighted titanium case for absolute comfort. Extensible genuine rubber strap to fit safely over a diving suit.
Delivered with a translucent protective bumper with removable magnifying glass

Details

Straps & bracelets: See page 60
Movements: See page 68
Technical specifications: See page 71



241810



241811

I.N.O.X. MECHANICAL

COLLECTION'S TECHNICAL SPECIFICATION

Case

Ø 43 mm

Crystal: sapphire

Crystal specification: triple coated and anti-reflective

Water resistant to: 20 ATM/200 M/660 FT

See-through caseback

Screw-in caseback

Screw-down crown

Protected crown

Dial

Luminescent hands

Luminescent markers

Date

Monobloc



COLLECTION'S KEY FOCUS POINTS

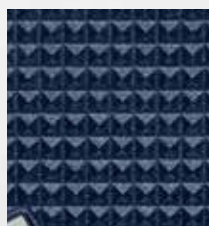


Swiss made automatic movement

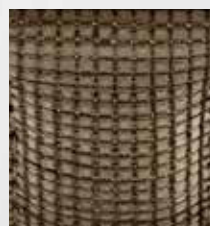
See-through case back



Oversized protected screw-down crown



Officer's Knife inspired guilloché monobloc dial



Innovative wood strap*



Bezel with anti-scratch coating



Water-resistant up to 200m

* Depending on models

I.N.O.X. MECHANICAL

Ø 43 mm

Movement

Mechanical automatic
ETA 2824-2

Specific features

Swiss Made automatic movement ETA 2824-2 visible through the exhibition case back.
High grade Swiss Made stainless steel (316L) case. Innovative wood strap.
Delivered with a removable bumper to protect against scratches

Details

Straps & bracelets: See page 60
Movements: See page 68
Technical specifications: See page 71



241834



241836

I.N.O.X. MECHANICAL

Ø 43 mm

Movement

Mechanical automatic
ETA 2824-2

Specific features

Swiss Made automatic movement ETA 2824-2 visible through the exhibition case back.
High grade Swiss Made stainless steel (316L) case. Most resilient stainless-steel bracelet ever conceived.
Delivered with a removable bumper to protect against scratches

Details

Straps & bracelets: See page 60
Movements: See page 68
Technical specifications: See page 71



241835



241837

I.N.O.X. V

COLLECTION'S TECHNICAL SPECIFICATION

Case

Ø 37 mm

Crystal: sapphire

Crystal specification: triple coated and anti-reflective

Water resistant to: 20 ATM/200 M/660 FT

Screw-in caseback

Screw-down crown

Protected crown

Dial

Luminescent hands

Luminescent markers

Monobloc



COLLECTION'S KEY FOCUS POINTS



Versatile design to fit contemporary lifestyle



Oversized protected screw-down crown



Coloured bumper to protect against scratches



Thick underset sapphire crystal



Water-resistant up to 200m



Counter-weight inspired by the Swiss Army Knife

I.N.O.X. V

Ø 37 mm

Movement

Analog quartz
Ronda 715

Specific features

Withstands 130 extreme endurance homologation tests
Bold high grade Swiss Made rose-gold (PVD) stainless steel (316L) case. The genuine rubber strap can be worn in any situation and under any circumstance.
Delivered with a removable matching protective shield to accessorize the watch

Details

Straps & bracelets: See page 60
Movements: See page 68
Technical specifications: See page 71



241807



241808

I.N.O.X. V

Ø 37 mm

Movement

Analog quartz
Ronda 715

Specific features

Withstands 130 extreme endurance homologation tests
Bold High grade Swiss Made stainless steel (316L) case. The genuine rubber strap can be worn in any situation and under any circumstance
Delivered with a removable matching protective shield to accessorize the watch

Details

Straps & bracelets: See page 60
Movements: See page 68
Technical specifications: See page 71



241768



241769

I.N.O.X. V

Ø 37 mm

Movement

Analog quartz
Ronda 715

Specific features

Withstands 130 extreme endurance homologation tests
Bold High grade Swiss Made stainless steel (316L) case. Innovative handwoven survival paracord strap.
Delivered with a removable matching protective shield to accessorize the watch

Details

Straps & bracelets: See page 60
Movements: See page 68
Technical specifications: See page 71



241770



241771





MAVERICK

The Maverick collection offers the perfect blend of elegance and function. Combining quartz or automatic movement, stainless steel case and sapphire crystal, Maverick watches are ready to follow you anywhere. So whether you're heading to the office, the mountains or an elegant dinner party, the Maverick is on your side.

MAVERICK

COLLECTION'S TECHNICAL SPECIFICATION

Case

Ø 43 mm

Crystal: sapphire

Crystal specification: triple coated and anti-reflective

Water resistant to: 10 ATM/100 M/330 FT

Screw-in caseback

Protected crown

Dial

Luminescent hands

Date

Applied indexes and numerals



COLLECTION'S KEY FOCUS POINTS



Unidirectional rotating bezel



Count-up scale



Chronograph & tachymeter functions



Crown protection and 100m water resistance

MAVERICK CHRONOGRAPH

Ø 43 mm

Movement

Analog quartz
Ronda 5030.D

Specific features

Diving watch with unidirectional rotating bezel and count-up scale. Chronograph and tachymeter functions
High grade Swiss Made stainless steel (316L) case
Crown protection and 100m water resistance

Details

Straps & bracelets: See page 60

Movements: See page 68

Technical specifications: See page 71



241689



241693



241695



241791



241797

New



241864

New



241865

MAVERICK

ø 43 mm

Movement

Analog quartz
Ronda 715

Specific features

Diving watch with unidirectional rotating bezel and count-up scale
High grade Swiss Made stainless steel (316L) case
Crown protection and 100m water resistance

Details

Straps & bracelets: See page 60
Movements: See page 68
Technical specifications: See page 71



241605



241789



241824



241825

MAVERICK

ø 43 mm

Movement

Analog quartz
Ronda 715

Specific features

Diving watch with unidirectional rotating bezel and count-up scale
High grade Swiss Made stainless steel (316L) case
Crown protection and 100m water resistance

Details

Straps & bracelets: See page 60
Movements: See page 68
Technical specifications: See page 71



241862



241863

MAVERICK

Ø 43 mm

Movement

Analog quartz

Ronda 715

Specific features

Diving watch with unidirectional rotating bezel and count-up scale

High grade Swiss Made stainless steel (316L) case

Crown protection and 100m water resistance



241602



241603



241697



241698



241798

MAVERICK SMALL

COLLECTION'S TECHNICAL SPECIFICATION

Case

Ø 34 mm

Crystal: sapphire

Crystal specification: triple coated and anti-reflective

Water resistant to: 10 ATM/100 M/330 FT

Screw-in caseback

Protected crown

Dial

Luminescent hands

Date

Applied indexes and numerals



COLLECTION'S KEY FOCUS POINTS



Unidirectional rotating bezel



Count-up scale



Black PVD treatment
on case and crown*

* Depending on models

MAVERICK SMALL

∅ 34 mm

Movement

Analog quartz
Ronda 705

Specific features

Diving watch with unidirectional rotating bezel and count-up scale
High grade Swiss Made stainless steel (316L) case
Crown protection and 100m water resistance

Details

Straps & bracelets: See page 60
Movements: See page 68
Technical specifications: See page 71



241609



241610



241612



241701



241790



241799



FieldForce

Blending iconic Victorinox design with a gear-shifting display technology, the FieldForce Collection is a force of its own. It's all about readability in any conditions, with bold, distinct numerals and generously sized hands enhanced with Super-LumiNova®. And it's not only the features that are distinct. This range exudes a confident, classic style all of its own, without forgetting its Swiss Army Knife heritage. Distinction is in its DNA.

FIELDFORCE

COLLECTION'S TECHNICAL SPECIFICATION

Case

Ø 42 mm

Crystal: sapphire

Crystal specification: triple coated and anti-reflective

Water resistant to: 10 ATM/100 M/330 FT

Screw-in caseback

Protected crown

Dial

Luminescent hands

Luminescent markers

Date

Day of the Week

Monobloc



COLLECTION'S KEY FOCUS POINTS



Date function*



Aluminum bezel



Counter-weight inspired by the Swiss Army Knife



Protected crown

* Depending on models

FIELDFORCE

Ø 42 mm

Movement

Analog quartz
Ronda 517

Specific features

Sporty, serious and masculine timepiece that thrives in any situation

With Day-Date function

Generously sized hands and numerals featuring Super-LumiNova® for easy day and night readability

Details

Straps & bracelets: See page 60

Movements: See page 68

Technical specifications: See page 71

New



241849

New



241850

New



241851

New



241846

New



241847

New



241848

FIELDFORCE CHRONO-GRAPH

Ø 42 mm

Movement

Analog quartz
Ronda 5030.D

Specific features

Sporty, serious and masculine timepiece that thrives in any situation

With chronograph functions and tachymeter scale
Generously sized hands and numerals featuring Super-LumiNova® for easy day and night readability

Details

Straps & bracelets: See page 60

Movements: See page 68

Technical specifications: See page 71

New



241855

New



241856

New



241857

New



241852

New



241853

New



241854







ALLIANCE

The Alliance collection is the strong, silent type. It flies under the radar and it never makes a fuss. But when you take a closer look, you'll find details that reveal complete confidence beneath the surface. In the most elegant manner, this collection is a blend of the very best of Victorinox design, technology and quality.

| ALLIANCE XS

COLLECTION'S TECHNICAL SPECIFICATION

Case

Ø 28 mm

Crystal: sapphire

Crystal specification: triple coated and anti-reflective

Water resistant to: 10 ATM/100 M/330 FT

Screw-in caseback

Dial

Luminescent hands

Luminescent markers

Applied numerals



COLLECTION'S KEY FOCUS POINTS



Bicolore strap*



Case: Ø 28 mm



Super-LumiNova® technology ensures effortless readability in the dark



Counter-weight inspired by the Swiss Army Knife

* Depending on models

ALLIANCE XS

ø 28 mm

Movement

Analog quartz
Ronda 773

Specific features

Feminin and timeless design to be worn in any situation.
Structured pearly dial
Super Luminova on dots and hands for easy readability

Details

Straps & bracelets: See page 60
Movements: See page 68
Technical specifications: See page 71

New



241840

ALLIANCE XS

ø 28 mm

Movement

Analog quartz
Ronda 773

Specific features

Feminin and timeless design to be worn in any situation.
Sunray brushed dial
Super Luminova on dots and hands for easy readability

Details

Straps & bracelets: See page 60
Movements: See page 68
Technical specifications: See page 71

New



241839

New



241841

New



241838

New



241842

| ALLIANCE SMALL

COLLECTION'S TECHNICAL SPECIFICATION

Case

Ø 35 mm

Crystal: sapphire

Crystal specification: triple coated and anti-reflective

Water resistant to: 10 ATM/100 M/330 FT

Screw-in caseback

Dial

Luminescent hands

Luminescent markers

Date

Applied indexes



COLLECTION'S KEY FOCUS POINTS



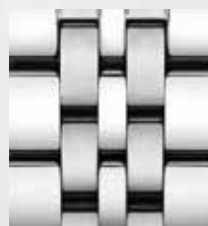
Moon phase*



Circular date aperture at 6 o'clock.



Polished pyramidal indexes



5-links polished and satin bracelet*

* Depending on models

ALLIANCE SMALL

Ø 35 mm

Movement

Analog quartz
Ronda 708

Specific features

Feminin and timeless design to be worn in any situation.
Circular date aperture at 6 o'clock
Moon-Phase function

Details

Straps & bracelets: See page 60
Movements: See page 68
Technical specifications: See page 71



241832



241833

ALLIANCE SMALL

Ø 35 mm

Movement

Analog quartz
Ronda 708

Specific features

Feminin and timeless design to be worn under any circumstance.
Moon-Phase function and brilliant cut authentic diamond at 6 o'clock
Genuine mother of pearl dial turns each watch into a truly unique one.

Details

Straps & bracelets: See page 60
Movements: See page 68
Technical specifications: See page 71



241752

ALLIANCE SMALL

Ø 35 mm

Movement

Analog quartz
Ronda 705

Specific features

Feminin and timeless design to be worn in any situation
Brilliant cut authentic diamond at 6 o'clock
Genuine mother of pearl dial turns each watch into a truly unique one.

Details

Straps & bracelets: See page 60
Movements: See page 68
Technical specifications: See page 71



241751



241753

ALLIANCE SMALL

ø 35 mm

Movement

Analog quartz
Ronda 705

Specific features

Feminin and timeless design to be worn in any situation.
Circular date aperture at 6 o'clock

Details

Straps & bracelets: See page 60
Movements: See page 68
Technical specifications: See page 71



241827



241828



241829

ALLIANCE SMALL

ø 35 mm

Movement

Analog quartz
Ronda 705

Specific features

Feminin and timeless design to be worn in any situation.
Eleven glittering crystals set on the dial. Circular date aperture at 6 o'clock
Genuine mother of pearl dial turns each watch into a truly unique one.

Details

Straps & bracelets: See page 60
Movements: See page 68
Technical specifications: See page 71



241830



241831



ALLIANCE SPORT

COLLECTION'S TECHNICAL SPECIFICATION

Case

Ø 44 mm

Crystal: sapphire

Crystal specification: triple coated and anti-reflective

Water resistant to: 10 ATM/100 M/330 FT

Screw-in caseback

Dial

Luminescent hands

Luminescent markers

Date

Applied indexes



COLLECTION'S KEY FOCUS POINTS



Monobloc dial



Tachymeter scale



Chronograph functions



Super-LumiNova® technology ensures effortless readability in the dark

ALLIANCE SPORT CHRONO-GRAPH

Ø 44 mm

Movement

Analog quartz
Ronda 5030.D

Specific features

Modern classic and sporty design to be worn under any circumstance. Chronograph and tachymeter functions
High grade Swiss Made stainless steel (316L) case
Monobloc dial to support your sporty lifestyle

Details

Straps & bracelets: See page 60
Movements: See page 68
Technical specifications: See page 71



241818

ALLIANCE SPORT CHRONO-GRAPH

Ø 44 mm

Movement

Analog quartz
Ronda 5030.D

Specific features

Modern classic and sporty design to be worn under any circumstance. Chronograph and tachymeter functions
High grade Swiss Made stainless steel (316L) case
Monobloc dial to support your sporty lifestyle

Details

Straps & bracelets: See page 60
Movements: See page 68
Technical specifications: See page 71



241816



241817

ALLIANCE SPORT CHRONO-GRAPH

Ø 44 mm

Movement

Analog quartz
Ronda 5030.D

Specific features

Modern classic and sporty design to be worn under any circumstance. Chronograph and tachymeter functions
High grade Swiss Made stainless steel (316L) case
Monobloc dial to support your sporty lifestyle

Details

Straps & bracelets: See page 60
Movements: See page 68
Technical specifications: See page 71



241819



241826

| ALLIANCE

COLLECTION'S TECHNICAL SPECIFICATION

Case

Ø 40 mm

Crystal: sapphire

Crystal specification: triple coated and anti-reflective

Water resistant to: 10 ATM/100 M/330 FT

Screw-in caseback

Dial

Luminescent hands

Luminescent markers

Date

Applied indexes



COLLECTION'S KEY FOCUS POINTS



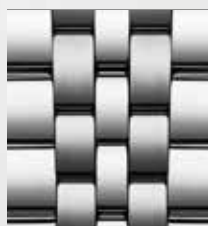
Date calendar



Polished pyramidal indexes



Metallic circular brushed / mat dial finish*



5-links polished and satined bracelet*

* Depending on models

ALLIANCE

∅ 40 mm

Movement

Analog quartz
Ronda 715

Specific features

Classic and timeless design to be worn under any circumstance
High grade Swiss Made stainless steel (316L) case
Generous sized hands and pyramidal markers enable effortless time readability

Details

Straps & bracelets: See page 60
Movements: See page 68
Technical specifications: See page 71



241801



241802



241803



241804



241823



241822

ALLIANCE

ø 40 mm

Movement

Digital quartz
Ronda 715

Specific features

Classic and timeless design to be worn under any circumstance
High grade Swiss Made stainless steel (316L) case
Generous sized hands and pyramidal markers enable effortless time readability. Delivered in a special box housing an assorted and exclusive Swiss Army Knife.

Details

Straps & bracelets: See page 60
Movements: See page 68
Technical specifications: See page 71



241801.1



241802.1



241804.1



ALLIANCE

ø 44 mm

Movement

Analog quartz
Ronda 6004.D

Specific features

Classic and timeless design to be worn under any circumstance
High grade Swiss Made stainless steel (316L) case
Generous sized hands and pyramidal markers enable effortless time readability

Details

Straps & bracelets: See page 60
Movements: See page 68
Technical specifications: See page 71



241762



241763

ALLIANCE

Ø 44 mm

Movement

Analog quartz
Ronda 6004.D

Specific features

Classic and timeless design to be worn under any circumstance
High grade Swiss Made stainless steel (316L) case
Generous sized hands and pyramidal markers enable effortless time readability. Delivered in a special box housing an assorted and exclusive Swiss Army Knife.

Details

Straps & bracelets: See page 60
Movements: See page 68
Technical specifications: See page 71

New



241763.1

ALLIANCE CHRONOGRAPH

Ø 44 mm

Movement

Analog quartz
Ronda Z60

Specific features

Classic and timeless design to be worn in any situation.
Chronograph functions
High grade Swiss Made stainless steel (316L) case
Generous sized hands and pyramidal markers enable effortless time readability

Details

Straps & bracelets: See page 60
Movements: See page 68
Technical specifications: See page 71



241745



241746

ALLIANCE CHRONOGRAPH

Ø 44 mm

Movement

Analog quartz
Ronda Z60

Specific features

Classic and timeless design to be worn in any situation.
Chronograph functions
High grade Swiss Made stainless steel (316L) case
Generous sized hands and pyramidal markers enable effortless time readability. Delivered in a special box housing an assorted and exclusive Swiss Army Knife.

Details

Straps & bracelets: See page 60
Movements: See page 68
Technical specifications: See page 71

New



241745.1





Airboss

With reliability and precision in mind, we created the Airboss collection. It's inspired by the actual Air Boss, the countdown commander of an aircraft carrier. He decides every take-off and landing time, a task requiring pinpoint accuracy. And that's just exactly what you can expect from your Airboss watch.

AIRBOSS

COLLECTION'S TECHNICAL SPECIFICATION

Case

Ø 42 mm

Crystal: sapphire

Crystal specification: triple coated and anti-reflective

Water resistant to: 10 ATM/100 M/330 FT

See-through caseback

Screw-in caseback

Dial

Luminescent hands

Luminescent markers

Date

Applied numerals



COLLECTION'S KEY FOCUS POINTS



Military time printed under the crystal



Swiss made automatic movement



Fabric strap with iconic red stitching*



Diamond-cut striations on the dial tracks



See-through case back



Circular slide rule

* Depending on models

AIRBOSS

Ø 42 mm

Movement

Mechanical automatic
ETA 2824-2

Specific features

Swiss Made automatic movement ETA 2824-2 visible through the exhibition case back

38-hour power reserve. Super-LumiNova® technology enables effortless readability in the dark. Calculate on the go thanks to the circular slide rule.

Military time

Details

Straps & bracelets: See page 60

Movements: See page 68

Technical specifications: See page 71



241820



241821

AIRBOSS

Ø 42 mm

Movement

Mechanical automatic
ETA 2824-2

Specific features

Swiss Made automatic movement ETA 2824-2 visible through the exhibition case back

38-hour power reserve. Super-LumiNova® technology enables effortless readability in the dark

Military time

Details

Straps & bracelets: See page 60

Movements: See page 68

Technical specifications: See page 71



241507



241508



241720



241740

AIRBOSS MACH 9

ø 45 mm

Movement

Mechanical automatic
ETA Valjoux 7750

Specific features

Swiss Made automatic movement ETA VALJOUX 7750 visible through the exhibition case back

48-hour power reserve. Convenient start/stop thumb operation thanks to a 180° movement rotation. Calculate on the go thanks to the circular slide rule.

Military time & chronograph functions.

Details

Straps & bracelets: See page 60

Movements: See page 68

Technical specifications: See page 71



241710



241716

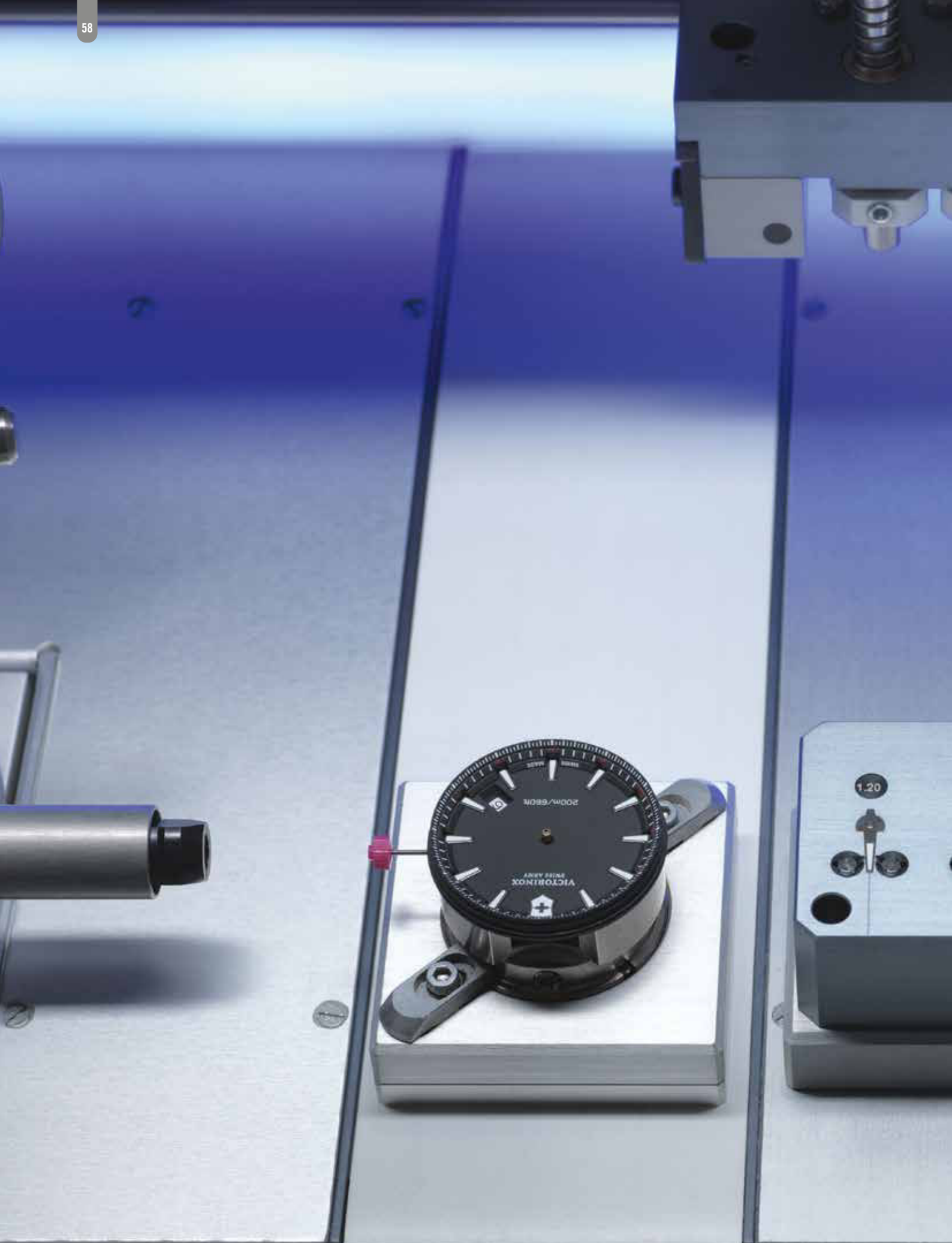


241722



241742





QUALITY & COMPONENTS

STRAPS & BRACELETS

DURABILITY, COMFORT AND QUALITY ARE THE WATCHWORDS THAT STEER VICTORINOX SWISS ARMY IN ITS CHOICE OF STRAPS AND BRACELETS.



STRAPS & BRACELETS TECHNICAL SPECIFICATIONS

LEATHER

All Victorinox Swiss Army leather straps are specially cut, stitched and lined by expert craftsmen. Various tanning techniques provide different textures and feels for our cowhide or calfskin straps. We also ensure that none of the leather used in our straps is sourced from endangered species. It is always important to note that the colours and suppleness of leather are subject to change with time and exposure to external factors. Exposing it to daily showers or swims is not recommended. We recommend that customers who live a very active lifestyle, especially one involving frequent exposure to salt water and/or heavy perspiration, opt for a steel bracelet or rubber strap.

STAINLESS STEEL

The 316L stainless steel alloy used in Victorinox Swiss Army bracelets has strong antimagnetic properties and is optimized for toughness and corrosion resistance.

MILANESE MESH BRACELETS

Stainless steel Milanese mesh bracelets are available in the Infantry collection. They are flexible, thin and easy-to-adjust, enabling the owner to adapt the size of their own bracelet without the need for any specific tools.

PVD (PHYSICAL VAPOR DEPOSITION)

Victorinox Swiss Army uses PVD coatings and was one of the first watchmaking brands to apply the "Black Ice" PVD treatment color, setting a trend in the industry since then.

GENUINE RUBBER

Victorinox Swiss Army uses genuine high-grade rubber for its straps, a natural and extremely comfortable material with a silky finish that is as resistant to ageing as silicone.

BALLISTIC NYLON

Some Victorinox Swiss Army models are equipped with ballistic nylon straps, which also features in our of most exclusive line of travel gear. It provides the ultimate in reliability and durability.

NATO INSPIRED STRAPS

NATO, or the North Atlantic Treaty Organization, has clear links to the military world. Our NATO-inspired straps are made from a single piece of textile woven from extraresistant nylon fibre and cotton.

PARACORD STRAPS

The paracord strap is original, innovative and unique. Hand-woven from genuine American-Made Military grade MIL-C-5040H

TYPE III certified parachute cord (highly resistant, multistrand nylon cord), it is the ideal companion for every adventure and expedition. Paracord straps can be unwoven and used for as many purposes as the wearer can possibly imagine.

SBB (Straps & Bracelets Base)

Our easy-to-use SBB references are available in our Media Centre and are regularly updated. This practical database enables you to find the strap reference your

customer needs quickly (metal bracelet, leather, rubber, paracord or any of our available straps) and look up compatible straps for every watch SKU launched since

2005. Contact your Victorinox sales representative for information about how to download a digital version from our Media Centre.

I.N.O.X.

005257



I.N.O.X.

241726

005108



I.N.O.X.

241688.1

005327



I.N.O.X. PROFESSIONAL DIVER

241733

005328



I.N.O.X. PROFESSIONAL DIVER

241734

005430



I.N.O.X. TITANIUM

241759

005498



I.N.O.X. V

241770

005490



I.N.O.X. V

241768

005502



I.N.O.X. V

241771

005258



I.N.O.X.

241727

005429



I.N.O.X. TITANIUM

241758

005330



I.N.O.X. PROFESSIONAL DIVER

241736

005164



I.N.O.X.

241719.1

005528



I.N.O.X. PROFESSIONAL DIVER

241781,241782

005495



I.N.O.X. V

241769

005329



I.N.O.X. PROFESSIONAL DIVER

241844

005715



I.N.O.X. V

241807

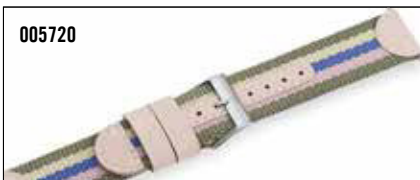
005490.1



I.N.O.X. V

241808

005720



005732

I.N.O.X. PROFESSIONAL DIVER
TITANIUM

241810

005631.1

I.N.O.X. PROFESSIONAL DIVER
TITANIUM

241811

005754

I.N.O.X. PROFESSIONAL DIVER
TITANIUM

241812

005709

I.N.O.X. PROFESSIONAL DIVER
TITANIUM

241813

005811



I.N.O.X. MECHANICAL

241834,241836

005261



I.N.O.X. MECHANICAL

241835,241837

005887



I.N.O.X. CARBON

241861

005884



I.N.O.X. CARBON

241858.1

005885



I.N.O.X. CARBON

241859

005886



I.N.O.X. CARBON

241860

005891



I.N.O.X. PROFESSIONAL DIVER

241843

005889



I.N.O.X. PROFESSIONAL DIVER

241845

MAVERICK

004229



MAVERICK

241698

004783



MAVERICK

241603

004816



MAVERICK SMALL

241610

004793

MAVERICK
MAVERICK CHRONOGRAPH241605,241789,241824,241825
241693,241791

004845



MAVERICK SMALL

241612,241790

004230

MAVERICK
MAVERICK CHRONOGRAPH241602,241697
241689,241695

004305



MAVERICK SMALL

241609,241701

005756

MAVERICK
MAVERICK CHRONOGRAPH241798
241797



MAVERICK SMALL

241799



005544



005544.1

MAVERICK
MAVERICK CHRONOGRAPH241862
241864

005946

MAVERICK
MAVERICK CHRONOGRAPH241863
241865

FIELDFORCE



005939

FIELDFORCE
FIELDFORCE CHRONOGRAPH241846,241847
241852,241853

005945

FIELDFORCE
FIELDFORCE CHRONOGRAPH241848
241854

005943

FIELDFORCE
FIELDFORCE CHRONOGRAPH241849,241850,241851
241855,241856,241857

ALLIANCE



005394

ALLIANCE SMALL

241827



005589

ALLIANCE SMALL

241832



005396



005352

ALLIANCE
ALLIANCE CHRONOGRAPH241762,241763,241763.1
241745,241745.1,241746

005850

ALLIANCE XS

241838



005381

ALLIANCE SMALL

241751,241752,241828,241829,
241830,241833

005387

ALLIANCE SMALL

241753,241831



005674

ALLIANCE

241801,241801.1,241802,
241802.1,241822

005853



ALLIANCE XS

241839,241840

005861



ALLIANCE XS

241841,241842

005761



ALLIANCE SPORT CHRONOGRAPH

241816,241817

005766



ALLIANCE SPORT CHRONOGRAPH

241818

005803



ALLIANCE SPORT CHRONOGRAPH

241826

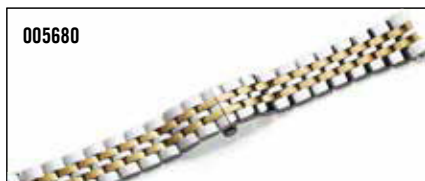
005769



ALLIANCE SPORT CHRONOGRAPH

241819

005680



ALLIANCE

241803

AIRBOSS

004446.1



AIRBOSS MACH 9

241710

005241

AIRBOSS
AIRBOSS MACH 9241720
241716

005406

AIRBOSS
AIRBOSS MACH 9241740
241742

004446



AIRBOSS

241507

004447

AIRBOSS
AIRBOSS MACH 9241508
241722

005543.1



AIRBOSS

241820

004446.2



AIRBOSS

241821

QUALITY

VICTORINOX SWISS ARMY WATCHES ARE COVERED BY A THREE-YEAR LIMITED WARRANTY, WHICH EXCEEDS THE INDUSTRY AVERAGE. THE THOROUGH PROCESSES IMPLEMENTED BY OUR QUALITY TEAM ENABLES US TO OFFER THIS EXTENDED WARRANTY. VICTORINOX SWISS ARMY WATCHES ARE SUBJECTED TO RIGOROUS TESTING AND NUMEROUS QUALITY CONTROLS BEFORE THEY ARE DISTRIBUTED.



Our watches comply fully with both European ISO standards and the Federation of the Swiss Watch Industry standards (NIHS). In addition, Victorinox has also introduced its own standards and internal tests. We self-monitor our production to ensure that each stage is mastered perfectly and our extensive certification controls continue until deliv-

ery. Victorinox Swiss Army also certifies each component that is brought in from external suppliers. The Victorinox Swiss Army Quality Team conducts at least 86 tests before certifying a design. The watches in the I.N.O.X. collection undergo 130 tests. Here is a list of the most important tests conducted on Victorinox Swiss Army watches :



CONFORMITY

Each component entering our production facility in Delémont in the Swiss Jura is checked to verify its dimensions, aesthetics, interchangeability, and physical and chemical resistance to guarantee its irreproachable quality. This process is implemented by our internal Development Team, who engineer the various components. All this occurs even before the production of a watch begins, thus ensuring a fully integrated process from the very start.

MECHANICAL & QUARTZ MOVEMENTS

Every movement endures stress and strain throughout its lifetime. To ensure all of our movements remain functional and accurate for as long as possible, Victorinox Swiss Army simulates watch wearing in its own quality lab to test every quartz, manual and automatic calibre equipping its watches.

WATER RESISTANCE

Victorinox Swiss Army watch cases are hermetically sealed using high-grade rubber gaskets and screw-in case backs to ensure that the movements are not exposed to moisture or dust. The Quality Team carries out individual and real-time water-resistance and water pressure tests up to 200 metres, depending on the watch model.

TEMPERATURE RESISTANCE

Heat chamber and humidity tests are performed on Victorinox Swiss Army watches to ensure they continue to function perfectly in the tropics. Low temperature tests are also conducted to check that the watch – and more specifically the mechanism – can withstand the climatic conditions encountered during the cold season.

CORROSION RESISTANCE

Perspiration, chlorine, soap, seawater, air pollution, and so on: these and other environmental factors can damage a watch's components and materials. Victorinox Swiss Army performs a number of tests to ensure that the parts equipping its watches do not suffer wear or a loss of mobility due to exposure to corrosive elements. Neutrality and skin sensitisation tests are also conducted on all components that come into contact with the skin, including cases, stainless steel bracelets, leather

UV RESISTANCE

Intense light and sunlight can damage many materials used in watches, such as coatings, synthetic elements, rubber and leather. Rigorous testing is thus performed on these materials to ensure their durability. Certification is only granted by our Quality Team if no signs of ageing are observed during these tests.

TRACTION/TORSION RESISTANCE

Buckles on leather straps and clasps on steel bracelets must withstand constant use during a watch's lifetime. Victorinox Swiss Army submits all of its watches to traction and torsion tests, with a particular focus on attachment pins to ensure that they can resist any accidental snagging.

VIBRATION RESISTANCE

Everyday wrist movements and sports such as cycling, jogging, horse riding or skiing can affect the performance, quality and accuracy of a watch. To prevent this, special machines put Victorinox Swiss Army watches through more severe vibrations than they would ever experience on even the most active of wrists. If a watch or any of its components does not survive this ordeal, it is not certified.

SHOCK RESISTANCE

A number of severe shock-resistance tests are performed on Victorinox Swiss Army watches. Heavy impacts – such as the equivalent of a severe collision with a wall, for example – are reproduced in the lab. Appropriate instruments later check that no mechanical damage has occurred during these tests.

AGE RESISTANCE

Victorinox Swiss Army watches are function-tested to simulate the ageing process. Moving parts such as push-pieces, crowns and bezels are turned and manipulated in a manner that replicates several years of normal use.

ABRASION RESISTANCE

The Quality Team conducts intensive abrasion tests, particularly on the cases, bracelets and straps, to ensure that our watches can be worn in all situations without suffering premature wear during their lifetimes.

VISUAL AND MANUAL TESTING

In addition to these mechanical tests, every Victorinox watch is visually checked by a member of the Quality Team between each manufacturing stage to ensure its overall quality according to our own Victorinox Swiss Army standards. If a watch does not pass this visual inspection, it is verified and repaired. Any creation that does not pass our quality checks will be discarded.

COMPONENTS & MATERIALS

VICTORINOX SWISS ARMY SOURCES THE BEST COMPONENTS AND MATERIALS FOR ITS SWISS-MADE WATCHES. ROBUSTNESS, DURABILITY AND QUALITY ARE THE KEY REQUISITES.



STAINLESS STEEL

The 316L stainless steel alloy used in Victorinox Swiss Army cases and bracelets has strong anti-magnetic properties and is optimised for toughness and corrosion resistance. The 316L stainless steel we use complies with the nickel migration limits imposed by the European REACH Regulation.

PVD (PHYSICAL VAPOR DEPOSITION)

Widely used in watchmaking, PVD is a high-performance, pollution-free and non-allergenic technology that is also employed by the aeronautic industry. The process involves adding a titanium coating to stainless steel by condensing a metal vapour in a partial vacuum, thus circumventing electrolytic and chemical processes. Victorinox Swiss Army also implements a special process for watches with hints of gold: a thin layer of gold powder is added after the surface is treated PVD, providing a longer-lasting finish than conventional gold-plating.

SAPPHIRE CRYSTALS

All Victorinox Swiss Army watches are fitted with a scratch-resistant crystal glass cut from a polished slice of solid sapphire. Each one is triple-coated with an anti-reflective treatment on the internal side for enhanced legibility.

GENUINE MOTHER-OF-PEARL

Resilient and iridescent, genuine mother-of-pearl features in several Victorinox Swiss Army dial designs. Genuine mother-of-pearl is produced inside the shells of certain molluscs, meaning that each dial adorned with mother-of-pearl is utterly unique.

BATTERIES

Victorinox Swiss Army equips its quartz watches with mercury-free batteries in compliance with global regulations and standards. This positive step towards environmental sustainability has no effect on either the precision or efficiency of a quartz watch. Each battery has an estimated lifespan of 2 years.

LUMINESCENCE

This technology, branded as Super-LumiNova®, offers enhanced brightness in low-light conditions thanks to a non-radioactive and non-toxic substance. Victorinox Swiss Army uses Super-LumiNova® for any highly functional features of its watches, usually applying it to components such as the hands, numerals or bezel-markers, etc.

AUTOMATIC MECHANICAL MOVEMENTS



ETA 2824-2

38 hour power reserve

28'800 vibrations/hour (4 Hz)

25 jewels

11^{1/2} lines

Ø 25.60 mm



ETA VALJOUX 7750

48 hour power reserve

28'800 vibrations/hour (4 Hz)

25 jewels

13^{1/4} lines

Ø 30.00 mm

MOVEMENTS & ELECTRONIC MODULES

MOVEMENTS – All movements used in our watches are **SWISS-MADE**. We mainly use the following two suppliers:

ETA: This company has over 200 years of experience manufacturing quality movements. ETA calibres mainly equip our mechanical watches and some of our quartz chronographs.

RONDA: This firm is one of the world's leading manufacturers of highly innovative and precise electronic watch movements. RONDA movements equip a great deal of our watches. In addition, Victorinox Swiss Army incorporates exclusive Swiss-developed and -made electronic modules into certain watches, such as the Night Vision.

CUSTOMER SERVICE

COMMITMENT TO THE HIGHEST CUSTOMER SATISFACTION IS ONE OF THE MAIN ENTREPRENEURIAL VALUE THAT CHARACTERISE VICTORINOX. ACHIEVING THIS GOAL IS THE UNIQUE AND ULTIMATE MISSION OF OUR INTERNATIONAL CUSTOMER SERVICE TEAM IN SWITZERLAND, OUR 70 GLOBAL SERVICE CENTRES AND OUR 200 CUSTOMER SERVICE REPRESENTATIVES, WATCHMAKERS AND TECHNICIANS AROUND THE WORLD.

KEEPING A VICTORINOX WATCH LOOKING ITS BEST AND WORKING PERFECTLY REQUIRES REGULAR SERVICING. ONLY AUTHORISED VICTORINOX SWISS ARMY CUSTOMER SERVICE CENTRES ARE ABLE TO ENSURE THE WORK CARRIED OUT MEETS OUR STANDARDS OF EXCELLENCE.

- Each watch sent to an authorised Victorinox Swiss Army (VSA) Customer Service Centre is handled by a professional watchmaker.

- A diagnostic is performed and a detailed cost estimate is established, free of charge (for watches that are no longer under warranty), which is submitted to you before any repairs are carried out.

- Once you have accepted the cost estimate, our watchmakers will implement all the necessary procedures, including the replacement of any worn or defective components.

Victorinox Swiss Army guarantees the availability of spare parts for 10 years after production has ended. After each service, your watch will be returned to you with a one-year warranty on the work carried out.



OUR MAINTENANCE SERVICES

AFFRONTING DAILY LIFE AS WELL AS SKIING, WATER-SPORTS AND SUDDEN VARIATIONS IN TEMPERATURE, A VICTORINOX WATCH REQUIRES CARE AND MAINTENANCE TO ENSURE ITS RELIABILITY AND TO DELIVER ON ITS PROMISE OF ACCOMPANYING YOU ON YOUR EVERYDAY ADVENTURES.

Three types of services are available at any of our authorised VSA Customer Service Centres.

► We strongly recommend a water-resistance test once a year, especially before a holiday when your watch is put under particular strain.

► Every two years, we recommend a maintenance service. This will ensure that :

- your watch is completely water-resistant (it is dismantled, all the gaskets and the crown are replaced if necessary, the case is cleaned, and so on.)
- the movement works correctly (the battery is changed in a quartz watch, mechanical movements are checked and adjusted)

► Every four to six years, depending on the model of your watch, your personal use and the local climate, we recommend a complete overhaul. This involves:

- A comprehensive revision of the movement (it is dismantled, the functions are checked, any worn components are replaced, etc.)
- Water-resistance and accuracy are also carefully verified.

OUR ADVICES FOR TAKING CARE OF YOUR VICTORINOX SWISS ARMY WATCH

LIKE ALL QUALITY PRODUCTS, VICTORINOX SWISS ARMY WATCHES REQUIRE ATTENTION AND CARE. FOLLOWING A FEW BASIC RECOMMENDATIONS WILL PROTECT YOUR WATCH OVER TIME.

► Water-resistance

To prevent any infiltration of water or dust, all watches (quartz or mechanical) should have their water-resistance checked every year by an authorised VSA Service Centre. We recommend conducting this test before the summer or before going on holiday, as this is when your watch is particularly exposed to water pressure and strong variations in temperature.

► Mechanical movements

An automatic or hand-wound movement is a miniaturised engine running 24 hours a day, 7 days a week. To sustain its accuracy (between -2 and +20 seconds per day), it needs regular maintenance and checking. We recommend that customers have the movements of their watches serviced every four to six years.

► Condensation

A sudden change in temperature may cause condensation to appear beneath the crystal. This will not affect the watch's functions and will soon disappear on its own. Nevertheless, it indicates a weakness in the watch's water-resistance and we strongly advise you to take your watch to an authorised VSA Customer Service Centre.

► Cleaning

To preserve the appearance of your watch, clean the case and bracelet regularly in slightly soapy water, then rinse in fresh water and dry with a soft cloth. Leather is a noble, evolving material. When it gets wet, it tends to lose its suppleness and colour. If possible, avoid frequent immersion in water and daily showers. When the watch has been in salt water, it should be carefully rinsed in fresh water and dried as soon as possible.

► Shocks

Avoid impact, drops and repeated friction that could abrade the metal and affect the watch's mechanism. We recommend removing your watch before playing sports such as tennis, squash or golf and avoiding contact with chemical products, exposure to high temperatures and strong magnetic fields.

TECHNICAL SPECIFICATIONS

REF	DESCRIPTION	PAGE	EAN	MOVEMENT	POWER RESERVE	CASE DIAMETER	CASE LIGHT	LUG WIDTH	STRAP/BRAZOLET REF
241507	Airboss Mechanical 42mm, anthracite dial, brown leather strap	55	7630000711328	ETA 2824-2	38h	42	10.85	22	004446
Case: Stainless steel, silver, grinded I Bezel: stainless steel, silver, grinded, fixed bezel I Dial: grey, diamond-cut, Military Time 24h I Crystal: sapphire, triple coated and anti-reflective I Case back: stainless steel, screw-in caseback. See-through caseback I Bracelet: leather, brown I Closure: stainless steel, regular buckle I Water resistant to: 10 ATM/100 M/330 FT I Battery Nr.: n/a									
241508	Airboss Mechanical 42mm, anthracite dial, bracelet	55	7630000711335	ETA 2824-2	38h	42	10.85	22	004447
Case: Stainless steel, silver, grinded I Bezel: stainless steel, silver, grinded, fixed bezel I Dial: grey, diamond-cut, Military Time 24h I Crystal: sapphire, triple coated and anti-reflective I Case back: stainless steel, screw-in caseback. See-through caseback I Bracelet: stainless steel, silver, grinded I Closure: stainless steel, regular buckle I Water resistant to: 10 ATM/100 M/330 FT I Battery Nr.: n/a									
241605	Maverick GS Large 2-tone, green bezel, green dial, bracelet	28	7630000716224	Ronda 715		43	9.7	22	004793
Case: Stainless steel, silver/gold two tone, polished-brushed, protected crown I Bezel: stainless steel, green, polished, unidirectional rotating bezel I Dial: green, circular brushed, Military Time 24h I Crystal: sapphire, triple coated and anti-reflective I Case back: stainless steel, screw-in caseback I Bracelet: stainless steel, silver/gold two tone, brushed I Closure: stainless steel, deployant clasp, Diver Extension I Water resistant to: 10 ATM/100 M/330 FT I Battery Nr.: 371									
241609	Maverick GS Small, blue bezel, blue dial, bracelet	31	7630000716170	Ronda 705		34	7.95	18	004305
Case: Stainless steel, silver, polished-brushed, protected crown I Bezel: stainless steel, blue, polished, unidirectional rotating bezel I Dial: blue, circular brushed, Military Time 24h I Crystal: sapphire, triple coated and anti-reflective I Case back: stainless steel, screw-in caseback I Bracelet: stainless steel, silver, brushed I Closure: stainless steel, deployant clasp, Diver Extension I Water resistant to: 10 ATM/100 M/330 FT I Battery Nr.: 371									
241610	Maverick GS Small, blue bezel, blue dial, blue rubber strap	31	7630000716187	Ronda 705		34	7.95	18	004816
Case: Stainless steel, silver, polished-brushed, protected crown I Bezel: stainless steel, blue, polished, unidirectional rotating bezel I Dial: blue, circular brushed, Military Time 24h I Crystal: sapphire, triple coated and anti-reflective I Case back: stainless steel, screw-in caseback I Bracelet: rubber, blue I Closure: stainless steel, regular buckle I Water resistant to: 10 ATM/100 M/330 FT I Battery Nr.: 371									
241612	Maverick GS Small 2-tone, green bezel, green dial, bracelet	31	7630000716248	Ronda 705		34	7.95	18	004845
Case: Stainless steel, silver/gold two tone, polished-brushed, protected crown I Bezel: stainless steel, green, polished, unidirectional rotating bezel I Dial: green, circular brushed, Military Time 24h I Crystal: sapphire, triple coated and anti-reflective I Case back: stainless steel, screw-in caseback I Bracelet: stainless steel, silver/gold two tone, brushed I Closure: stainless steel, deployant clasp, Diver Extension I Water resistant to: 10 ATM/100 M/330 FT I Battery Nr.: 371									
241682.1	I.N.O.X., black dial, black rubber strap	15	7630000718075	Ronda 715		43	13.58	21	005104
Case: Stainless steel, silver, brushed, Screw-down crown, protected crown I Bezel: stainless steel, silver, polished-brushed, fixed bezel I Dial: black, matt, Military Time 24h I Crystal: sapphire, triple coated and anti-reflective I Case back: stainless steel, screw-in caseback I Bracelet: rubber, black I Closure: stainless steel, regular buckle I Water resistant to: 20 ATM/200 M/660 FT I Battery Nr.: 371									
241688.1	I.N.O.X., blue dial, blue rubber strap	15	7630000718068	Ronda 715		43	13.58	21	005108
Case: Stainless steel, silver, brushed, Screw-down crown, protected crown I Bezel: stainless steel, silver, polished-brushed, fixed bezel I Dial: blue, matt, Military Time 24h I Crystal: sapphire, triple coated and anti-reflective I Case back: stainless steel, screw-in caseback I Bracelet: rubber, blue I Closure: stainless steel, regular buckle I Water resistant to: 20 ATM/200 M/660 FT I Battery Nr.: 371									
241689	Maverick Chronograph, blue bezel, blue dial, bracelet	27	7630000718808	Ronda 5030.D		43	12.2	22	004230
Case: Stainless steel, silver, polished-brushed, protected crown I Bezel: stainless steel, blue, polished, unidirectional rotating bezel, Tachymeter I Dial: blue, circular brushed I Crystal: sapphire, triple coated and anti-reflective I Case back: stainless steel, screw-in caseback I Bracelet: stainless steel, silver, brushed I Closure: stainless steel, deployant clasp, Diver Extension I Water resistant to: 10 ATM/100 M/330 FT I Battery Nr.: 395									
241693	Maverick Chrono 2-tone, green bezel, green dial, 2-tone bracelet	27	7611160049742	Ronda 5030.D		43	12.2	22	004793
Case: Stainless steel, silver/gold two tone, polished-brushed, protected crown I Bezel: stainless steel, green, polished, unidirectional rotating bezel, Tachymeter I Dial: green, circular brushed I Crystal: sapphire, triple coated and anti-reflective I Case back: stainless steel, screw-in caseback I Bracelet: stainless steel, silver/gold two tone, brushed I Closure: stainless steel, deployant clasp, Diver Extension I Water resistant to: 10 ATM/100 M/330 FT I Battery Nr.: 395									
241695	Maverick Chronograph, black bezel, black dial, bracelet	27	7611160049766	Ronda 5030.D		43	12.2	22	004230
Case: Stainless steel, silver, polished-brushed, protected crown I Bezel: stainless steel, black, polished, unidirectional rotating bezel, Tachymeter I Dial: black, circular brushed I Crystal: sapphire, triple coated and anti-reflective I Case back: stainless steel, screw-in caseback I Bracelet: stainless steel, silver, brushed I Closure: stainless steel, deployant clasp, Diver Extension I Water resistant to: 10 ATM/100 M/330 FT I Battery Nr.: 395									
241697	Maverick Large, black bezel, black dial, bracelet	29	7611160049780	Ronda 715		43	11.4	22	004230
Case: Stainless steel, silver, polished-brushed, protected crown I Bezel: stainless steel, black, polished, unidirectional rotating bezel I Dial: black, circular brushed, Military Time 24h I Crystal: sapphire, triple coated and anti-reflective I Case back: stainless steel, screw-in caseback I Bracelet: stainless steel, silver, brushed I Closure: stainless steel, deployant clasp, Diver Extension I Water resistant to: 10 ATM/100 M/330 FT I Battery Nr.: 371									
241698	Maverick Large, black bezel, black dial, black rubber strap	29	7611160049797	Ronda 715		43	11.4	22	004229
Case: Stainless steel, silver, polished-brushed, protected crown I Bezel: stainless steel, black, polished, unidirectional rotating bezel I Dial: black, circular brushed, Military Time 24h I Crystal: sapphire, triple coated and anti-reflective I Case back: stainless steel, screw-in caseback I Bracelet: rubber, black I Closure: stainless steel, regular buckle I Water resistant to: 10 ATM/100 M/330 FT I Battery Nr.: 371									
241701	Maverick Small, black bezel, black dial, bracelet	31	7611160049827	Ronda 705		34	8.9	18	004305
Case: Stainless steel, silver, polished-brushed, protected crown I Bezel: stainless steel, black, polished, unidirectional rotating bezel I Dial: black, circular brushed, Military Time 24h I Crystal: sapphire, triple coated and anti-reflective I Case back: stainless steel, screw-in caseback I Bracelet: stainless steel, silver, brushed I Closure: stainless steel, deployant clasp, Diver Extension I Water resistant to: 10 ATM/100 M/330 FT I Battery Nr.: 371									
241710	Airboss Mecha Chrono Mach 9, dark grey dial, brown leather strap	56	7630000720184	ETA Valjoux 7750	48h	45	14.6	22	004446.1
Case: Stainless steel, silver, grinded I Bezel: stainless steel, silver, grinded, bidirectional rotating bezel, Slide Rule I Dial: grey, diamond-cut, Military Time 24h I Crystal: sapphire, triple coated and anti-reflective I Case back: stainless steel, screw-in caseback. See-through caseback I Bracelet: leather, brown I Closure: stainless steel, deployant clasp I Water resistant to: 10 ATM/100 M/330 FT I Battery Nr.: n/a									

Power reserve: indicative value provided by the movement manufacturer

General: D = Dial / C = Case / S = Strap

Dial finish: DC = Diamond-Cut / CB = Circular Brushed / MOP = Mother-Of-Pearl / MAT = Matt / GRY = Grainy / OPN = Opalin

Case material : SSte = Stainless Steel / Carb = Carbon / Tita = Titanium

Example: 241507 - Airboss D gray D C C SSte S brown leather = Airboss dial gray diamond-cut, case stainless steel, strap brown leather



VICTORINOX AG

c/o VICTORINOX SWISS ARMY SA | ROUTE DE BÂLE 63 | 2800 DELÉMONT | SWITZERLAND | TEL +41 (0)32 421 39 00 | FAX +41 (0)32 421 39 99
INFO.WATCH@VICTORINOX.COM



"VICTORINOX", "SWISS ARMY", "VICTORINOX SWISS ARMY" and the famous Victorinox Cross and Shield are trademarks owned by or licensed to Victorinox AG of Ibach Switzerland and its affiliated companies.

© VICTORINOX SWISS ARMY WATCH SA, III.2019.